

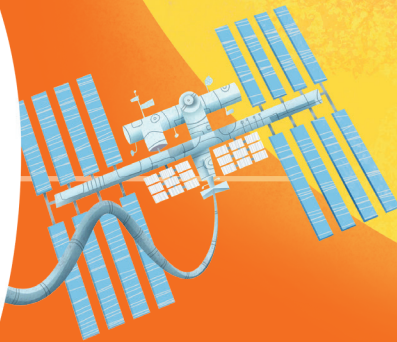
PM

Handwriting 5

Queensland Modern Cursive

Deborah
Davis

SAMPLE



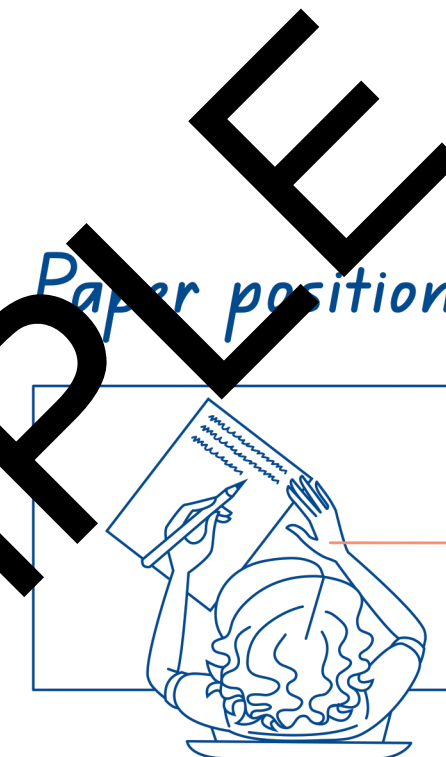
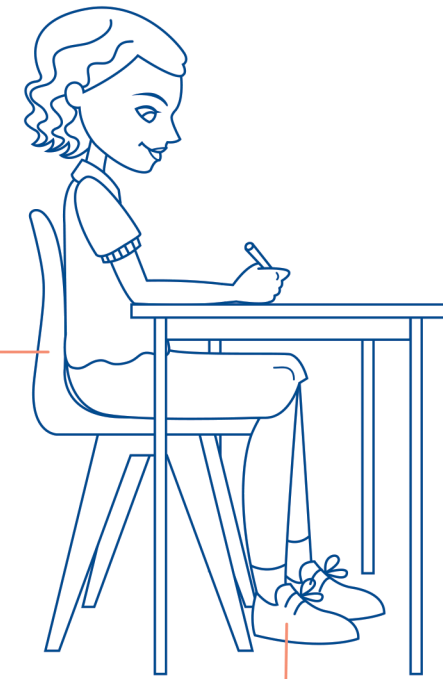
Contents

Are you ready to write?	2	The letter 's'	22	Module 4: Space exploration	
Module 1: Sun, Earth and Moon		Top finishers and the letter 'e'	23	Patterning exercises	42
Patterning exercises	3	Slope	24	Print script	43
Print script	4	Spacing	25	Capital letters	44
Capital letters	5	Size	26	Labelling diagrams	45
Labelling diagrams	6	Speed	27	Numerals	46
Numerals	7	End-of-module evaluation	28	Top finishers to ascenders	47
The letter 'x'	8	Module 3: Living and working in space		Revising the letter 'f'	48
Joining from 'o'	9	Patterning exercises	29	Classifying joins	49
The letter 'f'	10	Print script	30	Slope	50
Slope	11	Capital letters	31	Spacing	51
Spacing	12	Labelling diagrams	32	Size	52
Speed	13	Numerals	33	Speed	53
End-of-module evaluation	14	Practising diagonal joins	34	End-of-module evaluation	54
Introducing 8mm blue lines	15	Practising horizontal joins	35	Module 5: The flourished alphabet	
Module 2: Planets of the solar system		Writing the letter 'r'	36	Introducing the flourished alphabet	55
Patterning exercises	16	Slope	37	Using flourished script	61
Print script	17	Spacing	38	Practising all scripts	62
Converting between scripts	18	Size	39	Independent writing activity	63
Labelling diagrams	19	Speed and legibility	40	Teacher observation guide	64
Numerals	20	End-of-module evaluation	41		
Drop-on joins	21				

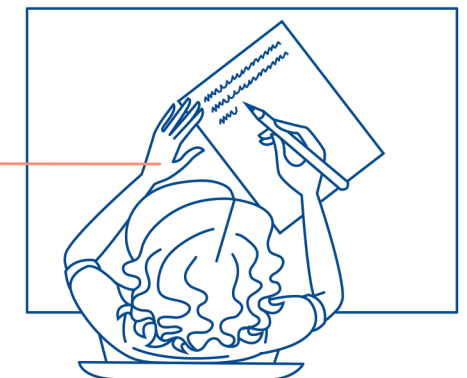
Are you ready to write?

Posture

Ensure your feet are flat on the floor and you are sitting well back in the chair.



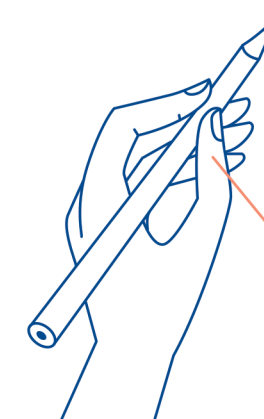
Hold the paper with your non-writing hand.



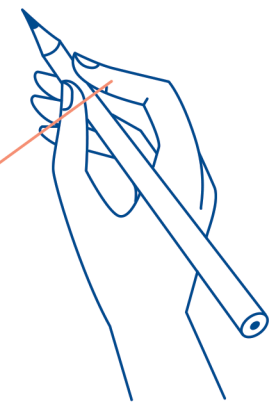
right-handed

left-handed

Pencil grip



left-handed



right-handed

Hold your pencil with one finger on top of the barrel.

Support the barrel with your thumb.

PM Handwriting 5 learning features

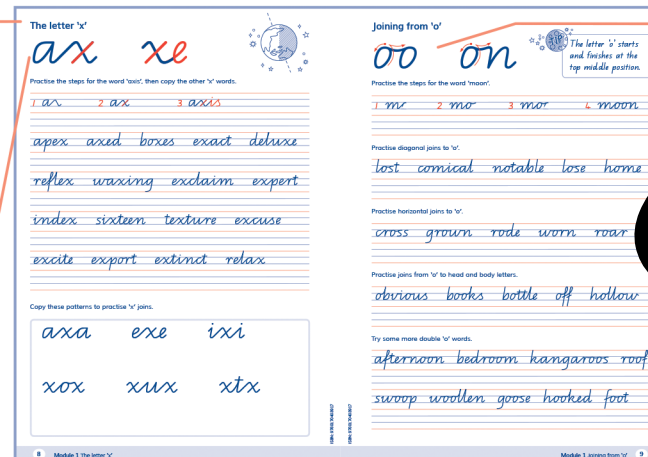
Handwriting pages arranged into 4 thematic modules. Module 5 introduces flourished letters for presentation purposes and to encourage a personal style.

Large letter models in two colours to reinforce the skill or join

QR code linked to online extension activities on selected pages

Activities focusing on legibility: size, slope, spacing and speed

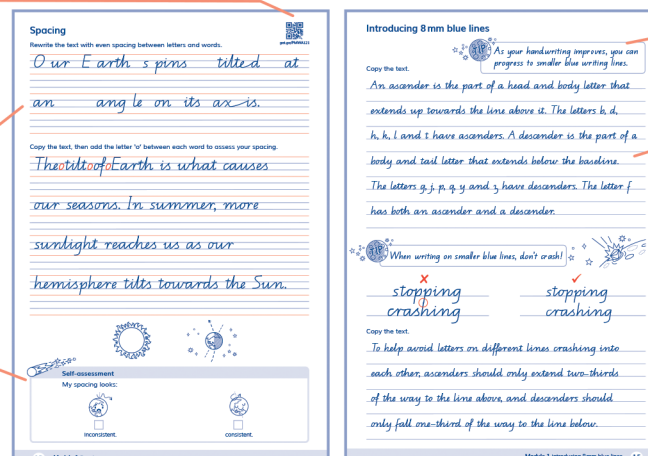
Self-assessments and end-of-module evaluations



Revision practice of tricky joins

Student tips

Introduction to 8mm blue writing lines



The letter 'x'

ax

xe



Practise the steps for the word 'axis', then copy the other 'x' words.

1 ax 2 ax 3 axis

apex axed boxes exact deluxe

reflex waxing exclaim expert

index sixteen texture excuse

excite export extinct relax

Copy these patterns to practise 'x' joins.

axa

exe

ixi

xox

xux

xtx

Joining from 'o'

oo

on



The letter 'o' starts and finishes at the top middle position.

Practise the steps for the word 'moon'.

1 m 2 mo 3 mo 4 moon

Practise diagonal joins to 'o'.

lost conical notable lose home

Practise horizontal joins to 'o'.

cross grown rode worn roar

Practise joins from 'o' to head and body letters.

obvious books bottle off hollow

Try some more double 'o' words.

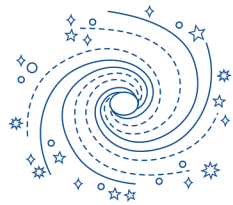
afternoon bedroom kangaroos roof

swoop woollen goose hooked foot

SAMPLE

Converting between scripts

Complete the table to practise print, cursive and capital letters.



Print	Cursive	Capital letters
Milky Way	Milky Way	
		UNIVERSE
solar system		
	planets	
Mercury		
	Venus	
Mars		
	asteroids	
Kuiper belt		
	satellites	
meteoroid		
	Earth	

Match each definition to a word from the table above. Write the answer in your preferred script.

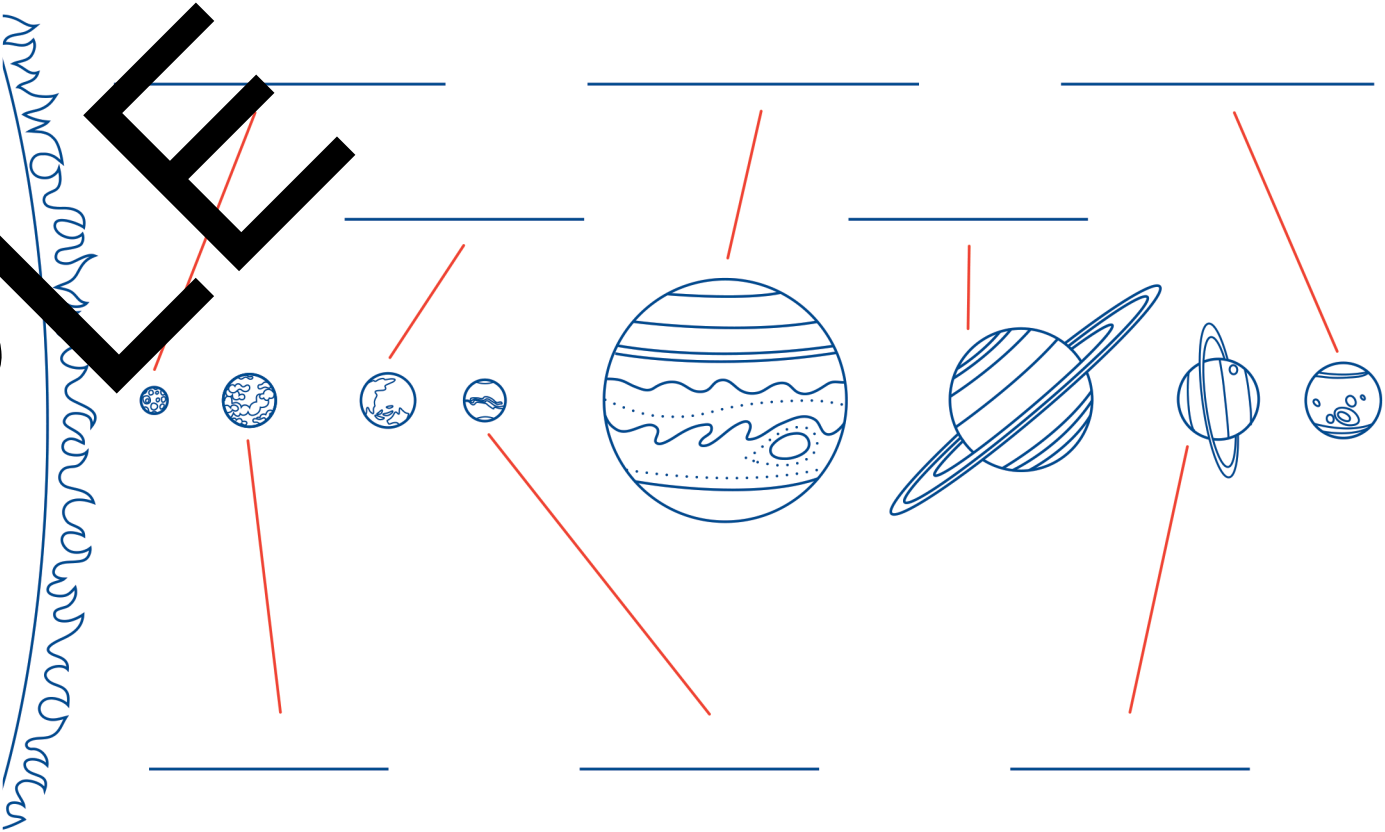
- the red planet made up of dense rock: _____
- the galaxy that contains our solar system: _____
- a belt of small bodies beyond Neptune: _____
- spacecraft or astronomical bodies in orbit: _____
- the only planet known to support human life: _____
- the planet closest to the Sun: _____

Labelling diagrams

Label the planets in our solar system. Use print script.

Earth	Venus	Mercury	Uranus
Saturn	Jupiter	Mars	Neptune

The planets of our solar system



Now, write the names of the planets in cursive, starting with the planet closest to the Sun.



Self-assessment

My print script is:



☐

good.



☐

very good.

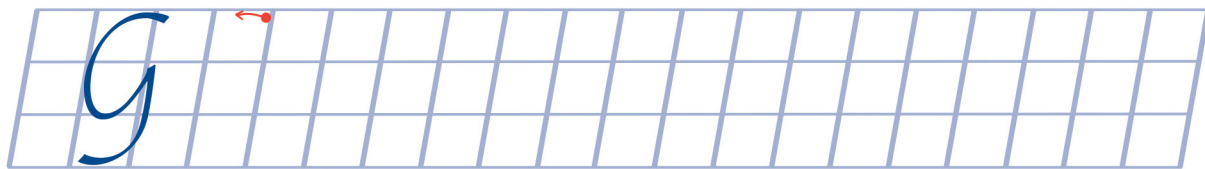


☐

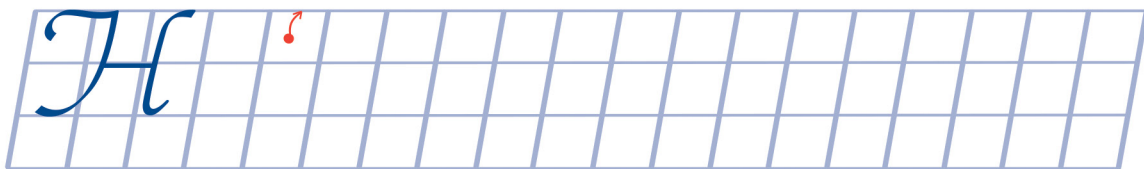
out of this world!



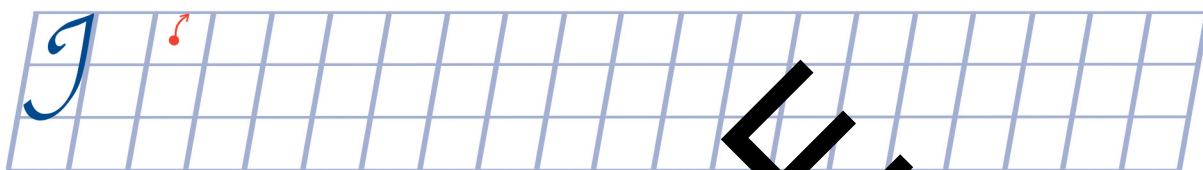
G



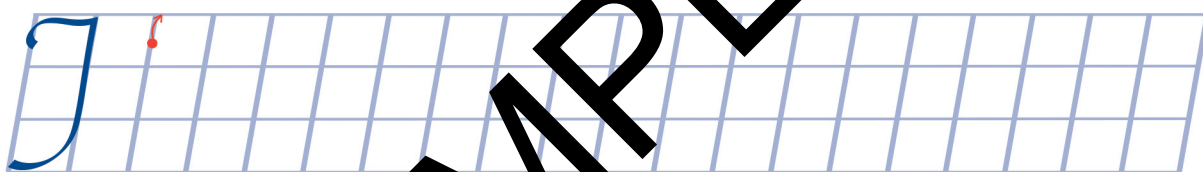
H



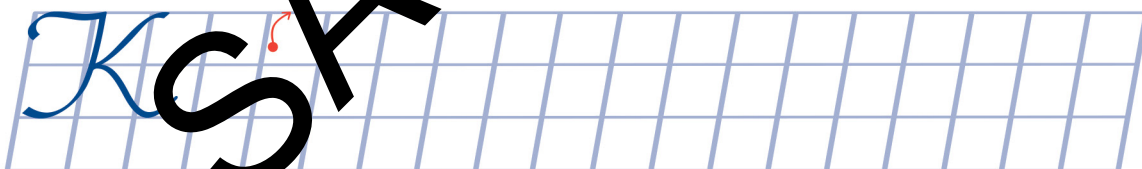
J



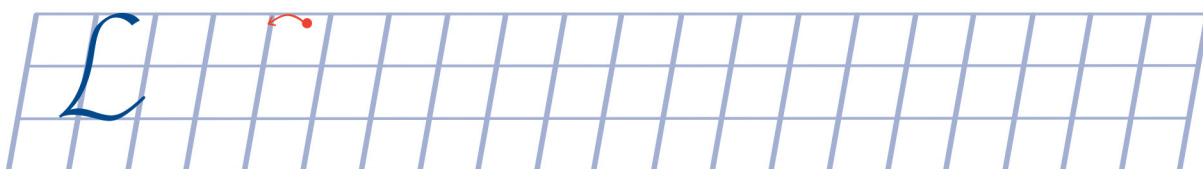
J



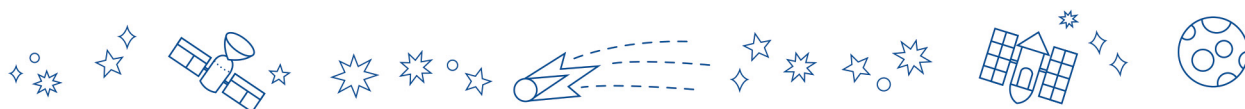
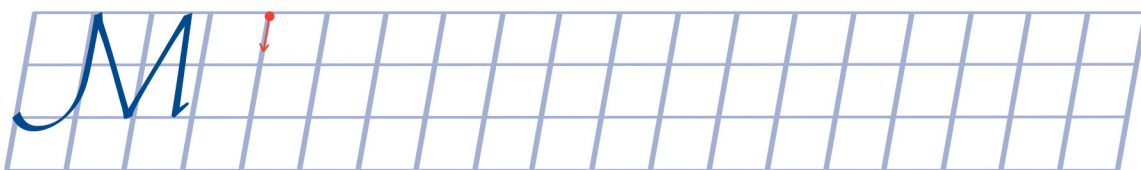
K



L



M



PM *Handwriting* is a carefully sequenced program of handwriting instruction for Prep to Year 6. It is designed to support students in developing a fluent, legible and automatic handwriting style.



A comprehensive handwriting program for Queensland:

P	I	2	3	4	5	6
PM Handwriting Queensland Beginner's Alphabet Prep	PM Handwriting Queensland Beginner's Alphabet Year 1	PM Handwriting Queensland Modern Cursive Year 2	PM Handwriting Queensland Modern Cursive Year 3	PM Handwriting Queensland Modern Cursive Year 4	PM Handwriting Queensland Modern Cursive Year 5	PM Handwriting Queensland Modern Cursive Year 6
9780170403863	9780170403870	9780170403887	9780170403894	9780170403900	9780170403917	9780170403924